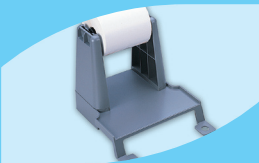


EZ Desktop Printer

EZ Options



Label Dispenser



Label Stand



Cutter Module



Ethernet



Exclusive Series

EZ1200 ProS



ISO 9001:2008 CERTIFIED



EZ1200 ProS Product Specifications

Model	EZ1200 ProS
Print Method	Thermal Transfer / Direct Thermal
Resolution	203 dpi (8 dots/mm)
Print Speed	5.5 IPS (140 mm/s)
Print Width	4.25" (108 mm)
Print Length	Min. 0.16" (4 mm)** ; Max. 68" (1727 mm)
Memory	4MB Flash (2MB for user storage) ; 8MB SDRAM
Sensor Type	Adjustable reflective sensor. Fixed transmissive sensor, central aligned.
Media	Types: Continuous form, gap labels, black mark sensing, and punched hole; label length set by auto sensing or programming. Width: 1" (25.4 mm) Min. - 4.64" (118 mm) Max. Thickness: 0.003" (0.06 mm) Min. - 0.01" (0.25 mm) Max. Label roll diameter: Max. 5" (127 mm) Core diameter: 1", 1.5", 3" (25.4 mm, 38.1 mm, 76.2 mm)
Ribbon	Types: Wax, wax/resin, resin Length: 981' (300 m) Width: 1.18" Min. - 4.33" (30 mm - 110 mm) Max. Ribbon roll diameter.: 2.67" (68 mm) Core diameter: 1" (25.4 mm)
Printer Language	EZPL, GEPL (Godex Eltron® Printer Language), GZPL (Godex Zebra® Printer Language)
Software	Label design software: QLabel-IV (for EZPL only) Driver: Windows 2000, XP, Vista, 7, Server 2003 and 2008 / DLL: Windows 2000, XP and Vista
Resident Fonts	Bitmap fonts: 6, 8, 10, 12, 14, 18, 24, 30, 16X26 and OCR A & B Bitmap fonts 90°, 180°, 270° rotatable, single characters 90°, 180°, 270° rotatable Bitmap fonts 8 times expandable in horizontal and vertical directions Scalable fonts 90°, 180°, 270° rotatable
Download Fonts	Bitmap fonts 90°, 180°, 270° rotatable, single characters 90°, 180°, 270° rotatable Asian fonts 90°, 180°, 270° rotatable and 8 times expandable in horizontal and vertical directions Scalable fonts 90°, 180°, 270° rotatable
Barcodes	1-D Bar codes: Code 39, Code 93, Code 128 (subset A, B, C), UCC/EAN-128 K-Mart, UCC/EAN-128, UPC A / E (add on 2 & 5), I 2 of 5, I 2 of 5 with Shipping Bearer Bars, EAN 8 / 13 (add on 2 & 5), Codabar, Post NET, EAN 128, DUN 14, HIBC, MSI (1 Mod 10), Random Weight, Telepen, FIM, China Postal Code, RPS 128 and GS1 DataBar 2-D Bar codes: PDF417, Datamatrix code, MaxiCode, QR code and Micro QR code
Code Pages	CODEPAGE 437, 850, 851, 852, 855, 857, 860, 861, 862, 863, 865, 866, 869, 737 WINDOWS 1250, 1251, 1252, 1253, 1254, 1255 Unicode (UTF8, UTF16)
Graphics	Resident graphic file types are BMP and PCX, other graphic formats are downloadable from the software
Interfaces	Serial port: RS-232 (DB-9) USB port (default on) Parallel port: Centronics 36-pin
Control Panel	Two bi-color status-LEDs: Ready, Status Control key: FEED
Power	Auto Switching 100-240VAC, 50-60Hz
Environment	Operation temperature: 41°F to 104°F (5°C to 40°C) Storage temperature: -4°F to 122°F (-20°C to 50°C)
Humidity	Operation: 30-85%, non-condensing. Storage: 10-90%, non-condensing.
Agency Approvals	CE(EMC), FCC Class A, CB, cUL, CCC
Dimension	Length: 11.2" (285 mm) Height: 6.8" (171 mm) Width: 8.9" (226 mm)
Weight	6 lbs (2.72Kg) ,excluding consumables
Options	Rotary Cutter Label Dispenser External label roll holder for 10" (250 mm) OD label rolls External label rewinder CF card adapter with real time clock (max. 1GB CF card) Ethernet 10/100Mbps print server (default off; disable USB when in use) 802.11 b/g wireless print server (Default off; disables USB when in use. Must remove PS2 port and Ethernet card to install)
Warranty Period	12 months, or 50KM whichever come first

*Specifications are subject to change without notice. All company and/or product names are trademarks and/or registered trademarks of their respective owners.

** Minimum print height specification compliance can be dependent on non-standard material variables such as label type, thickness, spacing, liner construction, etc. Godex is pleased to test non-standard materials for minimum height printing capability.

Godex International
infoGT@godexintl.com
+886-2-2225-8580

Godex China
infoGC@godexintl.com
+86-21-5665-1313

Godex Europe
infoGE@godexintl.com
+49-2193-53396-0

Godex Americas
infoGA@godexintl.com
+1-805-987-5100